



Hyphen

Hyphen

At Hyphen our clients trust us to turn their concepts into reality. We do this with an attention to detail and an eye for **quality**, whatever the size of project.

Hyphen's ethos is to combine the high professional standards and **international reach** of a large architectural practice with the personalized approach of a local firm.

We offer an **inception-to-completion** architectural service and pride ourselves on being flexible and proactive so that we can tailor our services to precisely meet each clients' needs.

As a result, we are proud to have delivered projects for many of the world's best recognized companies and developers in over 50 countries worldwide.



Together

40 years of experience

Over 140 employees in 7 offices

Projects completed in over 50 countries worldwide

Hyphen

Through our European offices we have the ability to deliver projects across the EMEA region where we have a long track record in the retail, hospitality, workplace and industrial sectors.

Through our office in Chile and supported by our Madrid-based directors, we cover work in South American countries including Peru and Mexico.

Together
Over 140 staff representing
28 countries & 24 languages

Hyphen in numbers

1 Hyphen **7** offices **+140** professionals **19** nationalities

The Hyphen Group Ltd Turnover

2017	2018	2019
12 857 229 €	13 630 273 €	16 024 000 €

UK London & Winchester
Established 1980

Germany Berlin
Established 1992

France Paris
Established 2000

Spain Madrid
Established 2000

Italy Milan
Established 2017

Chile Santiago
Established 2017

Latin America

Europe

Our team

Berlin



Leo Faoro
Director



Olaf Gröger
Director

London



Eddie Miles
CEO



Alan Cheyne
Director



Wayne Taylor
Director

Milan



Giacomo Spinelli
Office Head

Madrid



Eva Diego
Director



Ricardo Pariente
Director

Paris



Xavier Manera
Director



Carol Netzer
Director

Winchester



Tony Luck
Director



Richard Rogers
Director

Santiago de Chile



Matías Menichetti
Office Head

New Business



Paula Martínez



Catalina Hoyos

Markets

Whilst we have extensive experience across Europe, there may be situations where law and practice demand that a locally registered architect support our statutory applications or advise on specific county practices. We classify the level of support needed as follows:

Europe

Latin America

Primary markets

Fully supported by Hyphen offices:

Spain	United Kingdom
France	Italy
Germany	Chile

Secondary markets

Limited local partner support required for statutory applications:

Republic of Ireland	Netherlands
Austria	Scandinavia
Switzerland	Belgium
Portugal	Latin America
USA	

Tertiary markets

More extensive local partner support required for statutory applications, translation and advice on local practice:

Poland	Russia
Czech Republic	Turkey
Baltic Region	Middle East
Balkan Region	Africa

Inception-to-completion architectural services

Feasibility

- Site appraisal and feasibility
- Local code compliance
- Local permitting
- Technical due dilligence

Pre-construction

- Concept development and design guides
- Design and technical development
- Project programming
- Budget management
- Design audit and value engineering

Construction

- Project delivery
- Change control
- Cost control
- Close out
- Site quality control

Post construction

- Handover and commissioning
- As built documentation
- Defects liability inspection and certification



Feasibility



Pre-construction



Construction



Post-construction

Portfolio



Antareal



Hyphen has supported Antareal with the delivery of various projects, across many different sectors including residential, workspace, retail, hospitality and mixed-use.

Working from inception-to-completion, we have been responsible for concept design, the coordination of local specialists and construction supervision.

Cannes – Rue des Serbes

Mixed-use (retail and offices)

Cannes – New build

Mixed-use (residential and retail)

Toulouse

Offices

Marseille – Luxury corporate retreat

Hospitality

Paris office

Toulouse

Marseille

Cannes

Luxury corporate retreat, Marseille

Location

France

Area

3000 sqm

Service

Full architectural design

Client

Antareal

Project

Refurbishment of two 19th-century buildings, located near the famous Palais Longchamp, into a luxurious hotel and conference centre.

Our key role was in restoring the original architectural features - many of which were inspired by the Neo-Renaissance, Rococo and Gothic eras.



Mixed-use development

Location

Cannes, France

Area

2150 sqm

Service

Full architectural design

Client

Antareal

Project

This mixed-use project offers an impressive commercial space, set over three floors, with a canopy and terrace. It also features three floors of double glazed office space, as well as a top floor reception with accommodation. This top-floor residential space was designed as a duplex, overlooking a spacious roof terrace for hosting events



New build in Cannes

Client

Antareal

Location

France

Service

Executive architecture

Project

We designed a new three-story building and extension to create 720 sqm of residential and 576 sqm of commercial space

Area

1354 sqm

Levels

Three



BMO REP

Location

Rue du Faubourg St-Honoré,
Paris

Area

940 sqm

Service

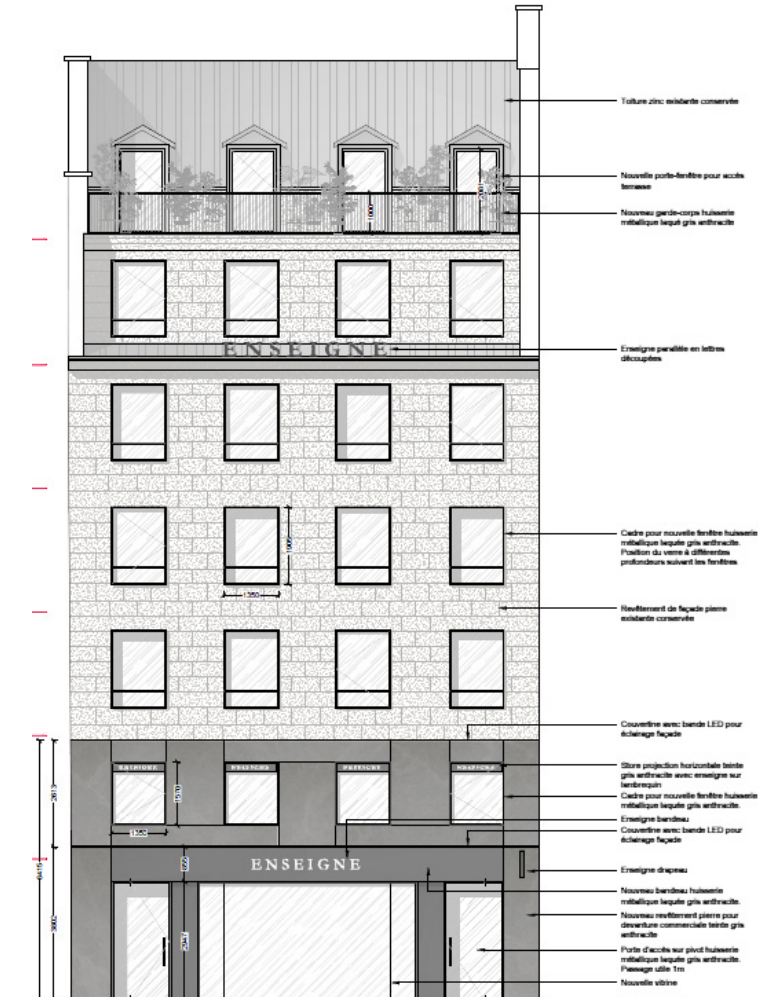
Concept design

Levels

Nine floors

Project

Commercialization pack of
a mixed use building
(retail and offices)
Hyphen developed the
concept design including
construction drawings



Le Corso, CAP 3000

Location

Saint-Laurent du Var, Nice,
France

Area

2500 sqm

Service

Executive architecture

Project

Mall extension of 45 luxurious boutiques,
a 3-star restaurant, conciergerie,
services. Role of management assistance
and consulting.



El Tinglao - Lagoh

Location

Seville

Area

1033 sqm

Service

Full architectural design, executive architecture and concept design

Levels

Two floors

Project

We provided inception-to-completion architectural services for El Tinglao's Spanish food court in the new Lagoh Shopping Centre. This included the design of seven individual food counters, as well as the design of the kitchens.



Sexta Avenida

Location

Madrid

Area

-- sqm

Service

Executive architecture

Project

Shopping centre



Los Alcores

Location

Sevilla

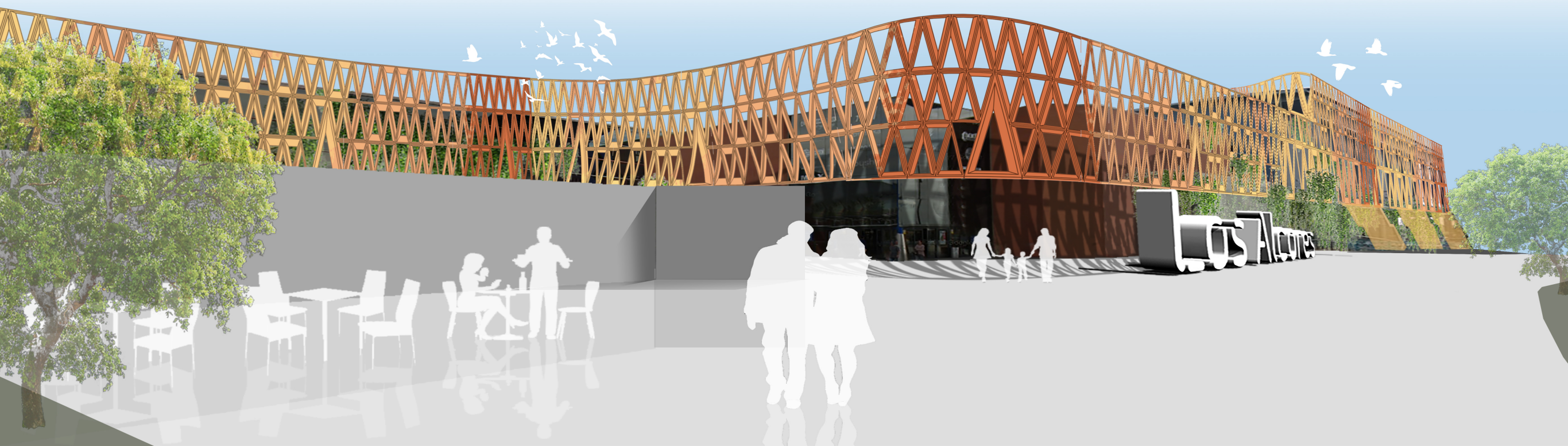
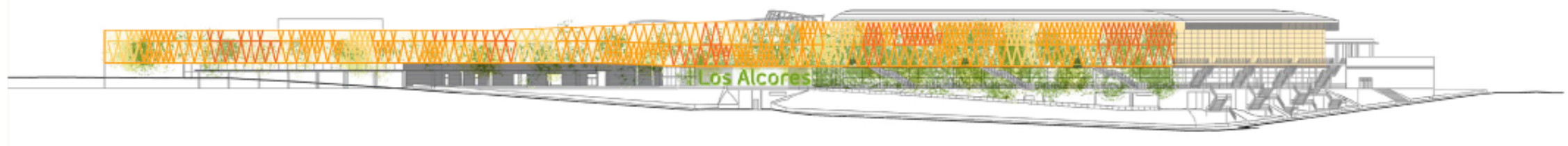
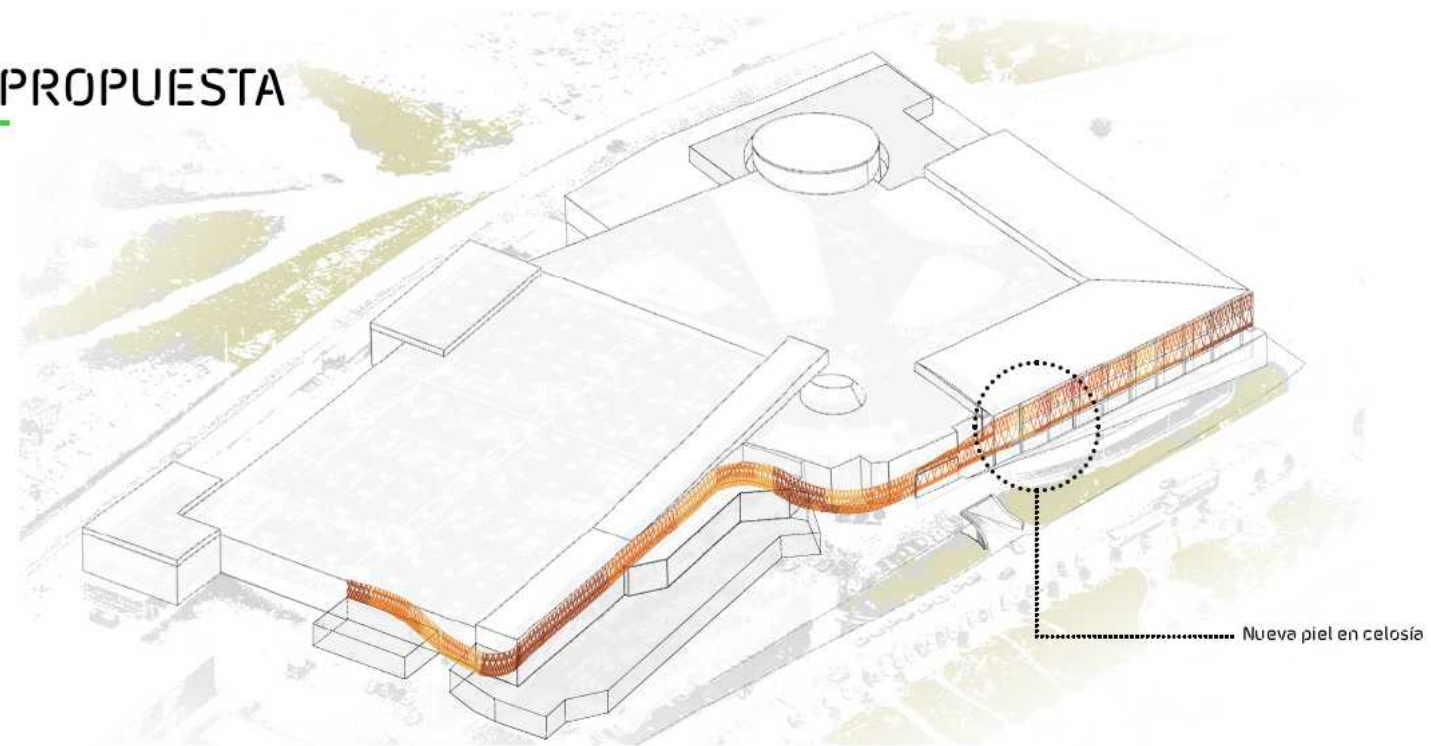
Project

Shopping centre partial
refurbishment

Service

Architectural Design -
Facade and Main entrance
new concept development

PROPUESTA



La Loma

Location

Jaén, Spain

Area

5790 sqm

Service

Full architectural design

Project

Shopping center



Mixed-use development

Location

Old Bond Street, London

Area

2500 sqm

Service

Full architectural design

Levels

Six

Project

Connecting three properties together to provide a more pragmatic, practical space for letting to retail and office clients.





Why Hyphen?

01

Scale

Large enough to deliver
Presence in major
European cities
Owner-led projects in an
owner-led business

02

Experience

Secured over 500 permits
across Europe in the last
three years
Sector specialists

03

Ability

Hyphen knows architecture
and construction
We recruit the best and
train them to be better
We speak your language

04

Speed

Speed to market governs
what we do
Hyphen has the resource
to think fast and act fast

05

Value

We build long-term
relationships
We seek efficiency
Hyphen goes the extra mile

Contact us

If you would like to discuss opportunities with us in more detail please contact:



Xavier Manera

xmanera@hyphen.archi

T +33 1 56 81 23 12

M +33 6 08 43 43 56



Carole Netzer

cnetzer@hyphen.archi

T +33 1 56 81 23 15

M +33 6 32 97 79 46

www.hyphen.archi

Hyphen



www.hyphen.archi

This document is non-commercial and the information it contains is confidential, privileged and strictly for the recipient(s) specified. It is provided for the sole purpose of exploring business opportunities between The Hyphen Group Ltd and the receiving party. No content or part of this content may be published, redistributed or disclosed to any third party or user without prior written consent from The Hyphen Group Ltd (Please contact: communication@hyphen.archi).